

Television Requires Fast Make-Up Change

By DICK SMITH

National Broadcasting Company Make-up Man

Of the many misconceptions the public holds about television, probably the most persistent comes as a legitimate hangover from the industry's early, experimental days. This is the false idea that television make-up consists of a combination of Indian war-paint and Scotland Yard disguise.

The truth about television make-up is that it differs very little from that with which the average woman coats her face in preparation for an evening at a night club. As a matter of fact, it is actually less extreme than make-up worn on the stage—though a little more extreme than that worn by movie actors.

Cameras Are Changed

The reason for the misconception is that ten years ago television actors actually did adorn their faces with bizarre streaks of orange and purple in order to look natural on the television screen. This was because television's early cameras were sensitive only to certain colors, and to prevent almost complete washing out or disappearance on the part of an actor's face it was necessary to daub the face with these few colors to which the electronic cameras were sensitive. But a lot of electrons have flowed under the window sill since those days, and today's cameras are sensitive enough to require only a modicum of make-up.

My primary problem these days is simply one of speed. Working on a mass-production, three-shows-a-day schedule, I have found that only through the technique of interchangeability can I provide realistic make-up for all the actors who appear on N. B. C.

I have, for instance, what I think is the most comprehensive collection of permanent false noses this side of Scotland Yard. For, whereas the average stage or movie make-up artist can spend days fashioning a custom-built Cyrano nose for a star, I must have that nose as part of my stock in trade. The same goes for leprechaun ears, bags under eyes and double, triple and quadruple chins. If you should drop into my make-up room in the R. C. A. Building, the chances are I could transform you from Abraham Lincoln to Fatty Arbuckle to Adolf Hitler within a period of 30 minutes.

How to Age Rapidly

But of all the techniques I have been forced to develop over the years, I am proudest of my rapid-aging process, whereby I can make an actor age 50 years in the time it takes a stagehand to drop a curtain. This process, designed to meet television's inexorable time schedule, calls for the coating of an actor's face with two layers of make-up. The bottom layer is that of the actor at the age of, say, 80. Over this layer will be the make-up of the actor as he looks at 30. The top

layer is water-soluble, the bottom layer waterproof.

As the actor comes rushing off the set for a quick aging while the cameras shift to another scene, all I have to do is wash his face. The top, 30-year-old, water-soluble make-up washes away, bringing into view the bottom waterproof, 80-year-old make-up.

Only on television can an actor grow old that quickly.

X-Ray Goal Is 4,100 Each Day

With only 20 days left to go, the Chest X-ray program must X-ray 4,100 persons each day between now and December 18 if the program is to reach its goal of 400,000.

The 82,000 people who have delayed getting their X-rays were urged to do so immediately by Lawrence Bates, program chairman, so that health authorities can get a complete picture of the tuberculosis situation in the community.

It is important that well people, in addition to the sick, be included in this over-all health survey, Bates said.

No X-ray unit will be working tomorrow as staff members and the more than 2,000 volunteers observe Thanksgiving. Yesterday the program took 3,052 X-rays, bringing the total, since the program opened, to 317,429 X-rays.

Director's Wife To Christen N. W.'s Hawaiian Plane

Mrs. Robert M. Hardy of Seattle, wife of a member of the board of directors of Northwest Airlines, will christen the N. W. A. plane just before it takes off to open the air line's service between the Pacific Northwest and Hawaii December 2, it was announced today.

In a traditional aircraft christening ceremony, Mrs. Hardy will splash water from Puget Sound and Pearl Harbor on the nose of N. W. A.'s transocean DC-4.

A Hawaiian name, Alii Manu, or "king bird," has been chosen for the first N. W. A. Hawaii plane. The ceremony will be held at 10 o'clock in the forenoon, with civic dignitaries from Seattle and Tacoma participating.

Gracie Allen Says: Thankful, But Dinner to Cook

WELL, tomorrow is Thanksgiving, and I'm thankful that the year lasted long enough for us to have Thanksgiving.

Because, as I remember the political campaigns last summer—and I realize a lot of people are trying to forget them—both the Democrats and Republicans predicted that the world would come to an end if the other side got in. But the world is still wobbling around and both Democrats and Republicans will sit down and eat Thanksgiving turkey, and that's one of the many things I like about this country of ours.

But I can't help thinking that the Pilgrims had things a little easier on their first Thanksgiving. After all, they had only a few irritable Indians to look out for. But I've got to get scalped by my butcher for an expensive turkey, and then cook dinner for a tribe of my husband's relatives all decked out in feathers and war paint!

Pennsylvania's dairy products valued at \$252,000,000 in 1947, were worth more than those of seven South Atlantic states combined.



Now! SEE Precision TELEVISION by hallicrafters —push button operation on all 12 channels!

Easy to install—you can do it yourself with simple instructions included! Made by Hallicrafters—world leading manufacturers of precision radio, television equipment!

see demonstrated at MARINA MART, INC. 1500 Westlake North At the big lighthouse tower on the west shore of Lake Union

Closing the only night club in East London, South Africa, its owner explained that there go out in daytime and prefer Rugby, cricket "or any free entertainment.

Mexico's President Aleman recently was taken on tour by the governor of the State of Mexico to see at first hand the rapid progress being made in reforestation there.

A newly-developed electron tube amplifies radio signals of very high frequency.

SHERMAN, CLAY... your television headquarters

presents **MAGNASCOPE**

Television

See the first Telecast from Seattle's Memorial Stadium tomorrow at Sherman, Clay's Television Department which will be open from 1:45 p. m. until 4:30 p. m. to allow you to view this event!

Open Mondays until 9:00 p. m. before Christmas!!!

by **MAGNAVOX**

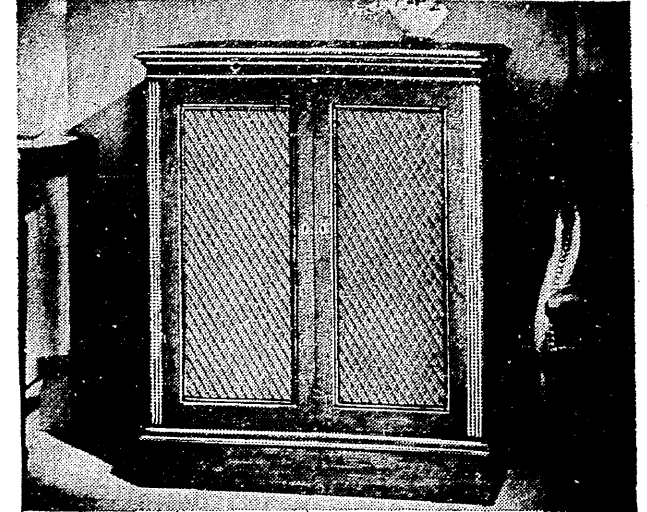
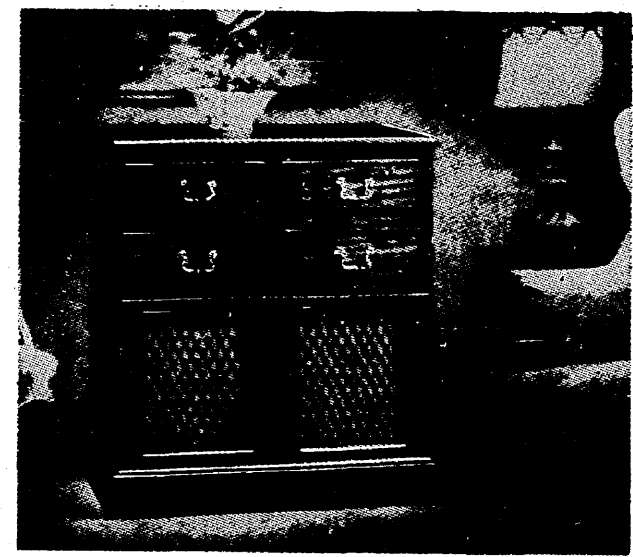
The makers of the famous Magnavox radio-phonographs now bring you Magnascope, the newest television wonder... clearer, brighter pictures and high fidelity sound.

The BERKELEY

television receiver to complement your radio-phonograph

\$420 10 Inch tube (plus installation)

Magnascope television in a cabinet identically matching the Magnavox Berkeley radio-phonograph console... a television receiver harmonious with any traditionally styled radio-phonograph, or it may be used alone for fine television. Ten-inch direct-view picture tube... mahogany finish cabinet with gridded doors that safely, completely close off the television receiver when not in use.



The EMBASSY

television-radio-phonograph for complete home entertainment

\$950 (plus installation)

Magnascope television... plus 20-watt high-fidelity radio chassis for fine static-free Armstrong FM, AM and world wide shortwave at the touch of a pushbutton... plus duomatic record changer that plays conventional records and 4 full hours of long-playing records through 2 high-frequency speakers and a 15-inch bass speaker. Magnascope 12½-inch direct-view picture tube... classic mahogany finish cabinet.

CONVENIENT TERMS

Sherman Clay

Open every Monday from 12 noon until 9 at night! Till Christmas! Tuesdays thru Saturdays, 10 to 6

a preview of your future entertainment pleasure... at

TELEVISION CENTER of THE BON MARCHE

Sometime in the near future, you may be sure there will be regular television broadcasting from Seattle!

Already it is at the testing stage, and definite events are scheduled for production! You'll want to be among those ready to enjoy these programs. The Bon

Marche is now able to offer you practically all the standard makes of television sets... in all types of cabinetry... modern blonde... 18th Century... or

Provincial! Select your television set Friday!

Music Center, Fourth Floor

BUY TELEVISION AND RADIO SETS ON OUR BUDGET PLAN

compare these famous models side by side.....

- ★ BERKSHIRE CUSTOM
- ★ CAPEHART
- ★ R.C.A. VICTOR
- ★ PHILCO
- ★ HOFFMAN
- ★ WESTINGHOUSE
- ★ PACKARD BELL
- ★ ADMIRAL
- ★ ZENITH
- ★ AND MANY OTHERS

installation, service!

Much of the efficiency of your television set will depend on the care with which it is installed. Our service men are experts, and they will test and retest until your set works with clarity and perfection!

THE BON MARCHE



The newest and smartest Christmas present for the entire family is your television set from The Bon Marche!